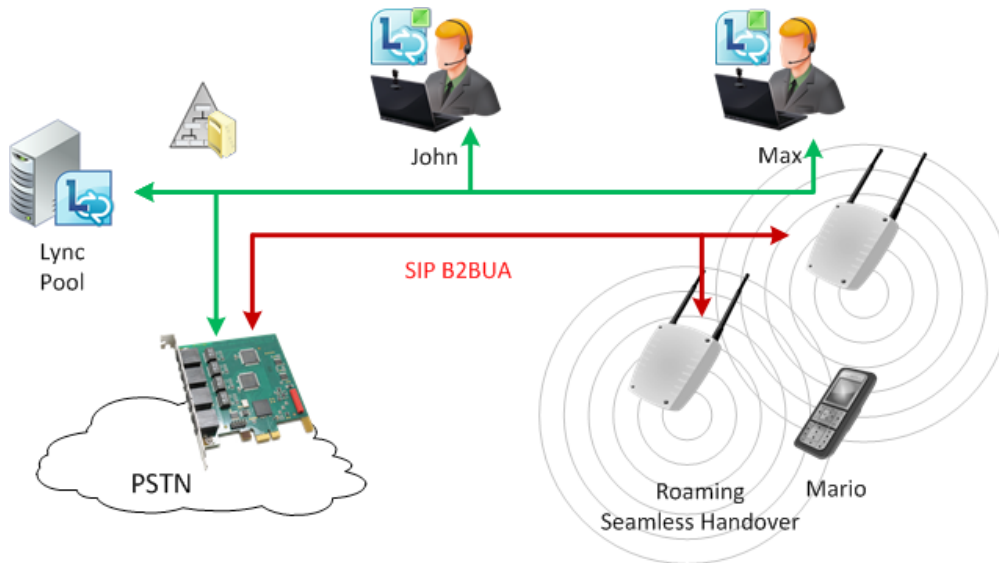


OfficeMaster Gate Functional Extensions

SIP B2BUA (item no. 20816)

Calls between SIP and ISDN are passed through as a default function of the media gateway. However, calls between two SIP subscribers require an internal loopback, which demands additional resources.



This loopback is referred to as a back-to-back user agent (B2BUA) and is the basis for connecting external SIP devices to the Microsoft Lync server.

The SIP B2BUA is licensed according to the number of concurrent channels required.

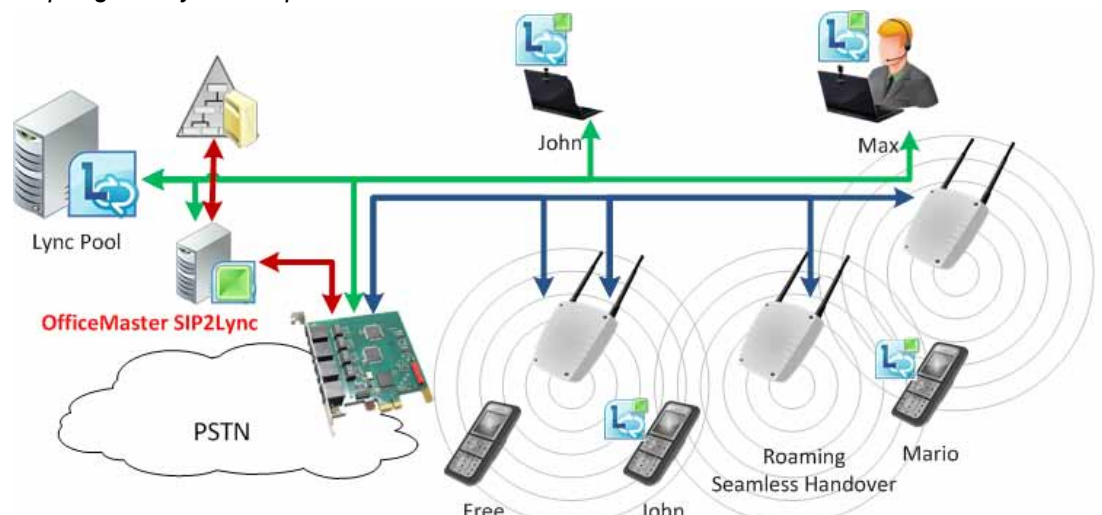
A call from a Lync subscriber to a SIP subscriber not connected via Lync takes up one channel.

SIP2Lync (item no. 22816)

An essential requirement for certification as a full Lync gateway is support for analog devices. Microsoft itself communicates exclusively via the SIP protocol and has outsourced all other technologies to the gateway manufacturers. Analog subscribers are created in the Lync Management Shell and assigned to a gateway. Lync is thus able to use policies, dial plans, normalization rules, etc. for these devices as well, even though they may not be fully-fledged Lync users with presence information. Additional software is required to fully integrate external devices into Lync.

OfficeMaster SIP2Lync from Ferrari electronic is a software solution that allows non-Lync telephony equipment to be used like fully-qualified Lync phones, even if these are not directly compatible with Lync. Above all, the frequently requested integration of DECT infrastructure can be implemented with software of this type. For subscribers, there is no apparent difference from "true" Lync devices. The telephones ring at the same time as the other instances where the user is registered, and presence information is updated to reflect the telephone's status.

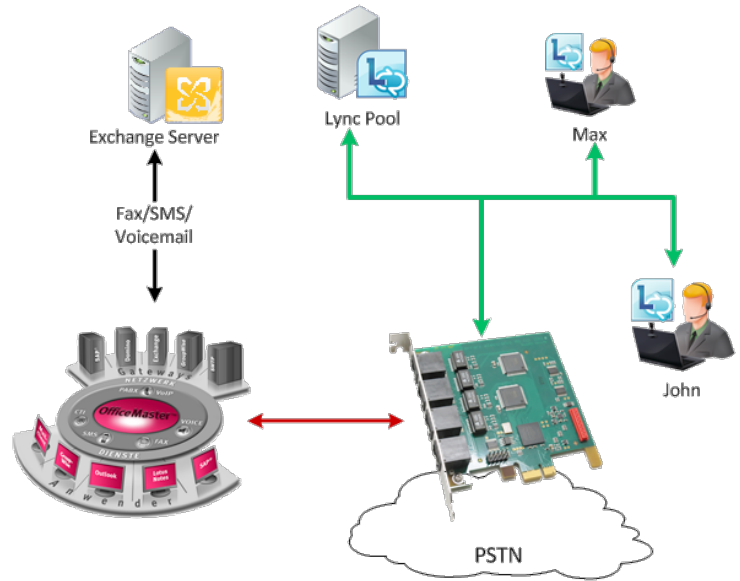
OfficeMaster SIP2Lync is licensed per gateway and requires the extension SIP B2BUA



Extension for Unified Messaging (item no. 20814)

This extension is necessary when OfficeMaster Gate UC is to be combined with the OfficeMaster software for fax, SMS and voicemail.

☞ *Extending the OfficeMaster Gate to include unified messaging functions requires licenses on a per line basis and a communication partner in the form of the OfficeMaster software solution and the correspondingly licensed lines.*



Analysis of dynamic routing tables (item no. 20818)

Very few enterprises have a homogeneous IT and telecommunications infrastructure. When operating OfficeMaster Gate as a media gateway for Microsoft Lync, it is often the case that a portion of users are served by a conventional PBX system and others by a Lync server. As a consequence, complicated settings are required for the routes by which any particular user is to be reached by phone. In most cases there are changes to the original setup, or there is a migration from one system to another, which requires constant updates to the data at different locations.

For these scenarios, Ferrari electronic has designed a tool that automatically maintains a list of all Lync users along with their communications data. This tool is implemented as a service on a server in the corresponding domain and keeps OfficeMaster Gate supplied with a current list of users. The synchronization interval for this service is configurable. Once this list is entered into the routing table of the OfficeMaster Gate, changes to user settings no longer have to be entered into the gateway. This additional tool makes OfficeMaster the ideal choice for placement between PSTN and the PBX/Lync server ("drop-and-insert" mode).

☞ *Licensing depends on the number of OfficeMaster Gates employed.*

