



# OfficeMaster GATE – FUNCTION UPGRADES

---

License extensions can be used to upgrade the OfficeMaster Gate hardware with additional functions. Some of these are included in the gateway as standard, others require separate software.

---

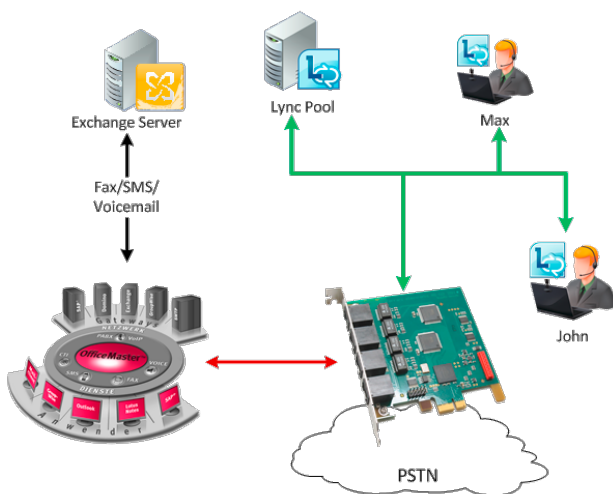
Data Sheet 2017/06/20 | Ferrari electronic

# OfficeMaster Gate – Function Upgrades

License extensions can be used to upgrade the OfficeMaster Gate hardware with additional functions. Some of these are included in the gateway as standard, others require a separate software.

## Unified Messaging upgrade (Art. No. XLN.49501, XLN.49510, XLN.49530)

OfficeMaster Gate UC can be combined with the OfficeMaster Suite for fax, SMS and voicemail.

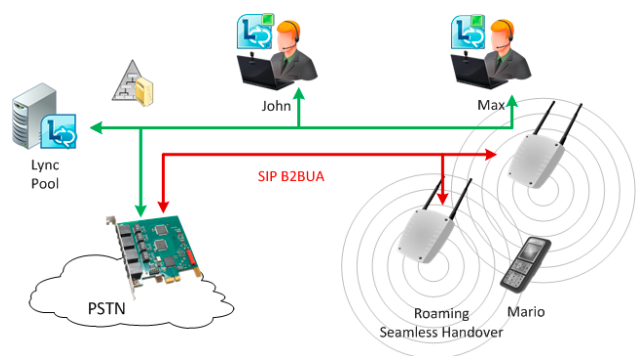


» Upgrading the OfficeMaster Gate to include unified messaging functions requires licenses on a per line basis and a communication partner in the form of the OfficeMaster Suite and the correspondingly licensed lines.

## SIP2SIP Lines (Art. No. SIP.10002; SIP.10010; SIP.10030)

Calls between SIP and ISDN are passed through as a default function of the media gateway; however, calls between two SIP subscribers require an internal loop-back. This loopback is referred to as a back-to-back user agent (B2BUA) and is the basis for connecting external SIP devices to the Microsoft Lync server.

A call from a Lync subscriber to a SIP subscriber not connected via Lync takes up one channel.



» SIP2SIP is licensed according to the number of concurrent channels employed.

---

### OfficeMaster Directory Service (Art. No. EDS.21001)

Very few enterprises have a homogeneous IT and telecommunications infrastructure. When operating OfficeMaster Gate as a media gateway for Microsoft Lync, it is often the case that a portion of users are served by a conventional PBX system and others by a Lync server. For these scenarios, Ferrari electronic offers a tool that automatically maintains a list of all Lync users along with their communications data.

The tool is implemented as a service on a server in the corresponding domain and keeps OfficeMaster Gate supplied with

a current list of users. This list is either compiled from queries on AD or imported from nearly any file. The synchronization interval for this service is configurable. Once this list is entered into the routing table of the OfficeMaster Gate, changes to user settings no longer have to be entered into the gateway. This additional tool makes OfficeMaster Gate the ideal choice between the exchange line and the PBX / Lync server.

Additionally, automatic black and white lists for multiple communication services, like for example fax, can be used with this tool. Not assigned fax dial through numbers will then for incoming calls prompt a “busy” signal.

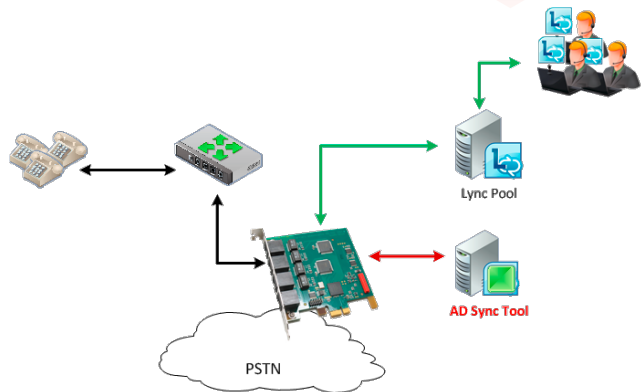
---

### OfficeMaster SIP2Lync (Art. No. S2L.22010, S2L.22025, S2L.22250, S2L.22000)

Microsoft Lync communicates exclusively via the SIP protocol and has outsourced all other technologies to the gateway manufacturers. Additional software is required to fully integrate external devices into Lync.

With OfficeMaster SIP2Lync, Ferrari electronic offers a software solution which ensures that subscribers can see no difference to „true“ Lync endpoints. The phones ring at the same time as the other instances where the user is registered, and presence information is updated to reflect the endpoint status.

OfficeMaster SIP2Lync is described in detail on a separate data sheet.



---

### OfficeMaster EntryControl (Art. No. EEC.23000, EEC.23001)

The decision to completely replace a telephone PBX system by Microsoft Lync can produce some surprises – like, just how essential some analog functions really are.

A typical example is a door intercom, which is usually connected via telephony.

OfficeMaster Gate transfers the call from the video door intercom to the Lync server and displays it in the receptionist’s Lync client. OfficeMaster EntryControl simultaneously shows the video signal on the workstation screen. A click on the door-opener button grants access and terminates the connection.

» EntryControl is licensed per intercom system.